

Фитинг резьбовой

Серия Z

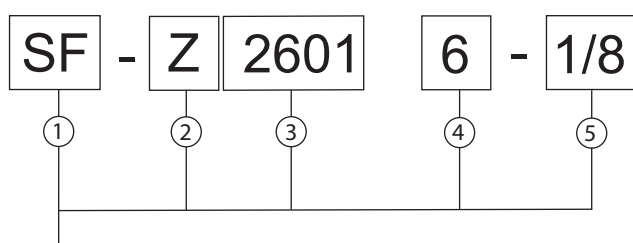
Для изготовления фитингов используется никелированная бронза.
 Рабочее давление до 40 бар.
 Диапазон рабочих температур - 40 – +120°C.



ФИТИНГ

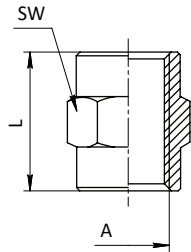
ФИТИНГ

Кодировка для заказа



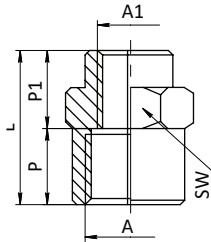
1	Тип продукции	SF	Фитинг
2	Серия	Z	Фитинг резьбовой
3	Модель	2601	
4	Диаметр трубопровода	6	от 4 до 25
5	Присоединение	1/8	G1/8" - G1"

SF-Z2543



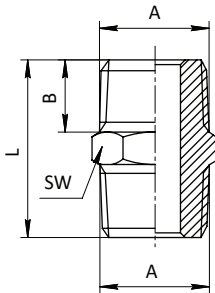
Модель	L	A	SW	Вес, г
SF-Z2543 1/8	15	G1/8	14	11
SF-Z2543 1/4	22	G1/4	17	20.5
SF-Z2543 3/8	24	G3/8	22	39
SF-Z2543 1/2	30	G1/2	26	49
SF-Z2543 3/4	31	G3/4	32	87
SF-Z2543 1	38	G1	41	180

SF-Z2553



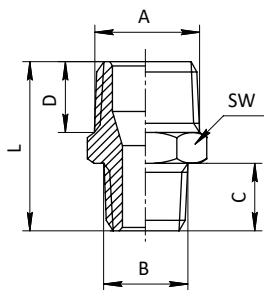
Модель	L	A	A1	P	P1	SW	Вес, г
SF-Z2553 1/8-1/4	22	G1/8	G1/4	8	10	17	25
SF-Z2553 1/8-3/8	24	G1/8	G3/8	8	12	22	20.5
SF-Z2553 1/4-3/8	23	G1/4	G3/8	8	8	22	46.5
SF-Z2553 1/8-1/2	24	G1/8	G1/2	8	12	26	58.5
SF-Z2553 1/4-1/2	24	G1/4	G1/2	10	12	26	55
SF-Z2553 3/8-1/2	24	G3/8	G1/2	10	12	26	48
SF-Z2553 3/8-3/4	30	G3/8	G3/4	10	14	32	120
SF-Z2553 1/2-3/4	30	G1/2	G3/4	10	14	32	107
SF-Z2553 3/4-1	38	G3/4	G1	16	19	41	180

SF-Z2501

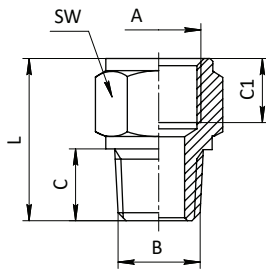


Модель	L	A	B	SW	Вес, г
SF-Z2501 M5	11.5	M5	4	8	3
SF-Z2501 1/8	17	G1/8	6	14	9.5
SF-Z2501 1/4	21	G1/4	8	17	15.5
SF-Z2501 3/8	24	G3/8	9	19	25
SF-Z2501 1/2	26	G1/2	10	24	45
SF-Z2501 3/4	29	G3/4	11	30	69
SF-Z2501 1	37	G1	14.5	33	75.5

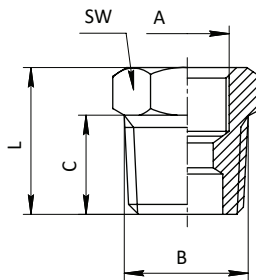
SF-Z2511



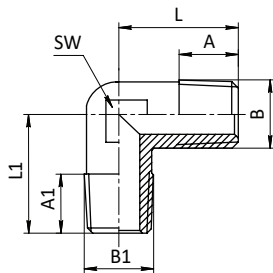
Модель	L	A	B	C	D	SW	Вес, г
SF-Z2511 M5-1/8	14	G1/8	M5	4	6	14	8.6
SF-Z2511 1/8-1/4	19	G1/4	G1/8	6	8	17	13.5
SF-Z2511 1/8-3/8	20	G3/8	G1/8	6	9	19	19.5
SF-Z2511 1/8-1/2	22	G1/2	G1/8	6	10	24	33.5
SF-Z2511 1/4-3/8	22	G3/8	G1/4	8	9	19	22
SF-Z2511 1/4-1/2	24	G1/2	G1/4	8	10	24	39
SF-Z2511 1/4-3/4	25	G3/4	G1/4	8	11	30	53.4
SF-Z2511 3/8-1/2	25	G1/2	G3/8	9	10	24	43
SF-Z2511 3/8-3/4	26	G3/4	G3/8	9	11	30	61
SF-Z2511 1/2-3/4	28	G3/4	G1/2	10	11	30	69
SF-Z2511 1/2-1	35	G1	G1/2	10	14	36	73.2
SF-Z2511 3/4-1	38.5	G1	G3/4	14.5	14	36	101

SF-Z2521


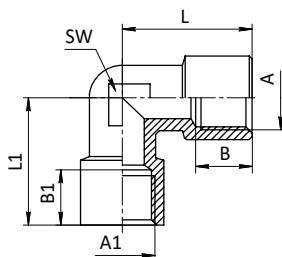
Модель	L	A	B	C	C1	SW	Вес, г
SF-Z2521 1/8-1/8	18	G1/8	G1/8	8	8	14	11
SF-Z2521 1/8-1/4	22.5	G1/4	G1/8	8	12	17	19.5
SF-Z2521 1/8-3/8	23	G3/8	G1/8	8	12	22	26.5
SF-Z2521 1/8-1/2	27.5	G1/2	G1/8	10	14	24	35
SF-Z2521 1/4-1/4	25.5	G1/4	G1/4	11	12	17	22.5
SF-Z2521 1/4-3/8	26	G3/8	G1/4	11	12	22	33
SF-Z2521 1/4-1/2	28	G1/2	G1/4	11	14	24	37
SF-Z2521 1/4-3/4	28	G3/4	G1/4	11	14	30	53.4
SF-Z2521 3/8-3/8	27	G3/8	G3/8	12	12	22	37
SF-Z2521 3/8-1/2	29	G1/2	G3/8	12	14	24	37.5
SF-Z2521 3/8-3/4	29	G3/4	G3/8	12	14	30	51.6
SF-Z2521 1/2-1/2	31	G1/2	G1/2	14	14	24	46
SF-Z2521 1/2-3/4	31	G3/4	G1/2	14	14	-	62.5
SF-Z2521 3/4-3/4	33	G3/4	G3/4	16	14	30	70.5

SF-Z2531


Модель	L	A	B	C	SW	Вес, г
SF-Z2531 1/8-M5	10.5	M5	G1/8	6	14	8
SF-Z2531 1/8-M6	10.5	M6	G1/8	6	14	8
SF-Z2531 1/4-1/8	13	G1/8	G1/4	8	17	10.5
SF-Z2531 3/8-1/8	14	G1/8	G3/8	9	19	19
SF-Z2531 3/8-1/4	14	G1/4	G3/8	9	19	13
SF-Z2531 1/2-1/8	15.5	G1/8	G1/2	10	24	39
SF-Z2531 1/2-1/4	15.5	G1/4	G1/2	10	24	32
SF-Z2531 1/2-3/8	15.5	G3/8	G1/2	10	24	24
SF-Z2531 3/4-1/4	17.5	G1/4	G3/4	11	30	70
SF-Z2531 3/4-3/8	17.5	G3/8	G3/4	11	30	58
SF-Z2531 3/4-1/2	17.5	G1/2	G3/4	11	30	41

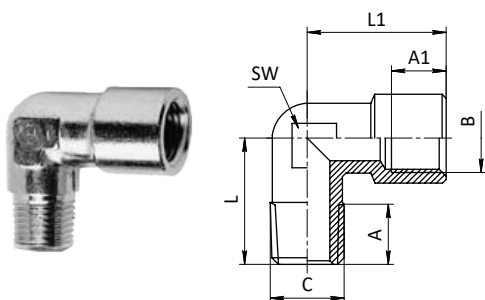
SF-Z2011


Модель	L	L1	A	A1	B	B1	SW	Вес, г
SF-Z2011 M5	11	-	4	-	M5	-	9	7
SF-Z2011 1/8	19	-	8	-	G1/8	-	11	17
SF-Z2011 1/8-1/4	19	21	8	11	G1/8	G1/4	11	19
SF-Z2011 1/4	24	-	11	-	G1/4	-	14	30
SF-Z2011 1/4-3/8	24	25.5	11	11.5	G1/4	G3/8	14	34
SF-Z2011 3/8	26	-	11.5	-	G3/8	-	17	54
SF-Z2011 1/2	31.5	-	14	-	G1/2	-	21	90
SF-Z2011 3/4	33	-	16	-	G3/4	-	25	97.6
SF-Z2011 1	39	-	17.5	-	G1	-	30	172

SF-Z2013


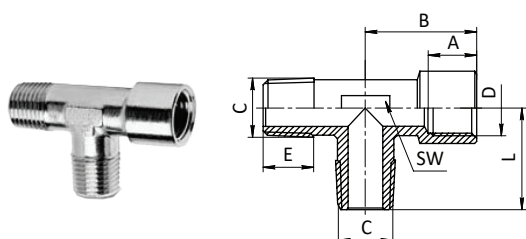
Модель	L	L1	A	A1	B	B1	SW	Вес, г
SF-Z2013 1/8	11	11	M5	M5	3	3	9	8
SF-Z2013 1/8	21	21	G1/8	G1/8	8	8	12	22
SF-Z2013 1/8-1/4	24	26.5	G1/8	G1/4	8	11	14	36
SF-Z2013 1/4	26.5	26.5	G1/4	G1/4	11	11	14	42
SF-Z2013 1/4-3/8	26	28	G1/4	G3/8	11	12	17	62
SF-Z2013 3/8	28	28	G3/8	G3/8	12	12	17	70
SF-Z2013 1/2	33.5	33.5	G1/2	G1/2	14	14	21	120
SF-Z2013 3/4	36.5	36.5	G3/4	G3/4	16.5	16.5	25	143
SF-Z2013 1	45	45	G1	G1	19	19	30	230

SF-Z2021



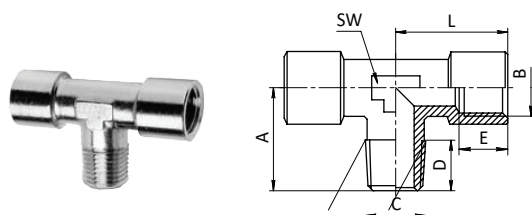
Модель	L	L1	A	A1	B	C	SW	Вес, г
SF-Z2021 M5	11.5	11	4	5	M5	M5	9	14
SF-Z2021 1/8	17	20	8	8	G1/8	G1/8	12	21
SF-Z2021 1/8-1/4	19	23	8	11	G1/4	G1/8	11	33
SF-Z2021 1/4-1/8	20.5	21	11	8	G1/8	G1/4	11	33
SF-Z2021 1/4	25	26.5	11	11	G1/4	G1/4	14	37
SF-Z2021 1/4-3/8	25	28	11	11.5	G3/8	G1/4	17	50
SF-Z2021 3/8-1/4	25.5	26.5	11.5	11	G1/4	G3/8	14	50
SF-Z2021 3/8	26	28	11.5	12	G3/8	G3/8	17	59
SF-Z2021 1/2	31	33.5	14	14	G1/2	G1/2	21	100
SF-Z2021 3/4	33	36.5	16	16.5	G3/4	G3/4	25	118
SF-Z2021 1	45	39	17.5	19	G1	G1	30	213

SF-Z2051



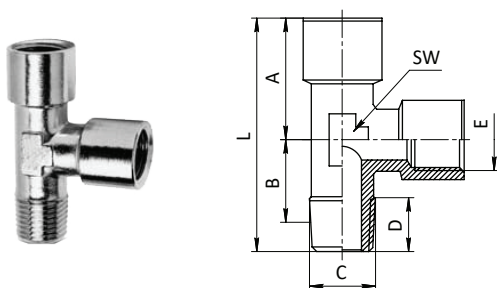
Модель	L	A	B	C	D	E	SW	Вес, г
SF-Z2051 1/8	19.5	9	19.5	G1/8	G1/8	8	10	22.5
SF-Z2051 1/4	25.8	11	24.8	G1/4	G1/4	11	13	51.5
SF-Z2051 3/8	30	13	28.5	G3/8	G3/8	11.5	17	81
SF-Z2051 1/2	34.8	14	31.8	G1/2	G1/2	14	22	137
SF-Z2051 3/4	34.8	16.5	33	G3/4	G3/4	16	25	165
SF-Z2051 1	42	19	39	G1	G1	17.5	30	250

SF-Z2061



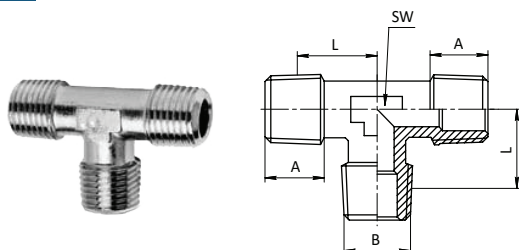
Модель	L	A	B	C	D	E	SW	Вес, г
SF-Z2061 M5	11	11,5	M5	M5	4	5	9	10
SF-Z2061 1/8	19.5	19.5	G1/8	G1/8	8	9	10	26.5
SF-Z2061 1/4	25.8	24.8	G1/4	G1/4	11	11	13	55.5
SF-Z2061 3/8	30	28.5	G3/8	G3/8	11.5	13	17	90
SF-Z2061 1/2	34.8	31.8	G1/2	G1/2	14	14	22	152
SF-Z2061 3/4	36.5	33	G3/4	G3/4	16	16,5	25	175
SF-Z2061 1	45	39	G1	G1	17.5	19	30	255

SF-Z2071

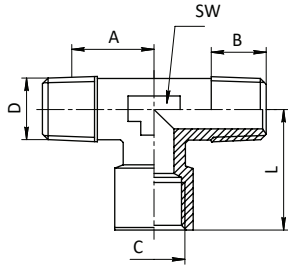


Модель	L	A	B	C	D	E	SW	Вес, г
SF-Z2071 M5	22.5	11,3	5	M5	4	M5	9	10
SF-Z2071 1/8	38	19.5	9	G1/8	8	G1/8	10	26
SF-Z2071 1/4	50.5	25.8	11	G1/4	11	G1/4	13	55
SF-Z2071 3/8	58.5	30	13	G3/8	11.5	G3/8	17	90.5
SF-Z2071 1/2	66.5	34.8	14	G1/2	14	G1/2	22	143
SF-Z2071 3/4	69.5	34.8	16,5	G3/4	16	G3/4	25	175
SF-Z2071 1	84	42	19	G1	17.5	G1	30	255

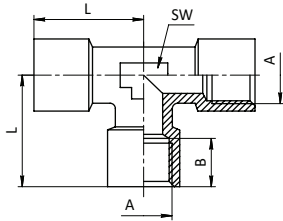
SF-Z2081



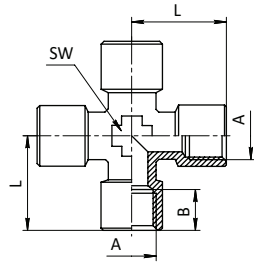
Модель	L	L1	A	B	SW	Вес, г
SF-Z2081 1/8	18.5	19	8	G1/8	10	14.2
SF-Z2081 1/4	24.8	24.8	11	G1/4	13	55
SF-Z2081 3/8	28.5	28.5	11.5	G3/8	17	93
SF-Z2081 1/2	31.8	31.8	14	G1/2	22	142
SF-Z2081 3/4	33.2	33	16.2	G3/4	25	170
SF-Z208 1 1	39	39	17.5	G1	30	235

SF-Z2091


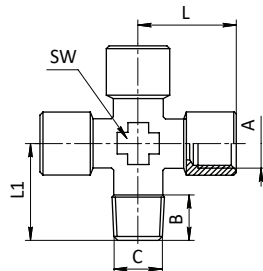
Модель	L	A	B	C	D	SW	Вес, г
SF-Z2091 1/8	20.5	18.5	9	G1/8	G1/8	10	22.5
SF-Z2091 1/4	25.8	24.8	11	G1/4	G1/4	13	49
SF-Z2091 3/8	28.5	28.5	13	G3/8	G3/8	17	79.5
SF-Z2091 1/2	34.8	31.8	14	G1/2	G1/2	22	139
SF-Z2091 3/4	36.5	33.2	16.5	G3/4	G3/4	25	170
SF-Z2091 1	45	36.5	19	G1	G1	30	250

SF-Z2003


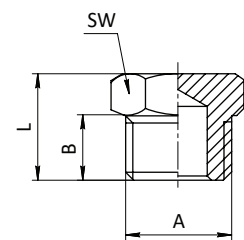
Модель	L	A	B	SW	Вес, г
SF-Z2003 M5	11	M5	5	9	22
SF-Z2003 1/8	20.5	G1/8	9	10	30.5
SF-Z2003 1/4	25.8	G1/4	11	13	62
SF-Z2003 3/8	30	G3/8	12	17	100
SF-Z2003 1/2	34.8	G1/2	14	22	161
SF-Z2003 3/4	36.5	G3/4	16.5	25	194
SF-Z2003 1	45	G1	19	30	265

SF-Z2033


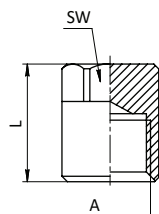
Модель	L	A	B	SW	Вес, г
SF-Z2033 1/8	21	G1/8	8	10	40.5
SF-Z2033 1/4	25.5	G1/4	11	13	81.5
SF-Z2033 3/8	28	G3/8	11.5	17	130
SF-Z2033 1/2	33.5	G1/2	14	21	196

SF-Z2034


Модель	L	L1	A	B	B1	C	SW	Вес, г
SF-Z2034 1/8	21	18.5	G1/8	8	8	G1/8	10	38.5
SF-Z2034 1/4	25.5	23.5	G1/4	11	11	G1/4	13	72
SF-Z2034 3/8	28	26	G3/8	11.5	11.5	G3/8	17	117
SF-Z2034 1/2	33.5	31	G1/2	14	14	G1/2	21	185

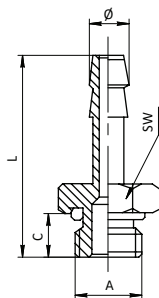
SF-Z2611


Модель	L	A	B	SW	Вес, г
SF-Z2611 M5	7.5	M5	4	8	2
SF-Z2611 1/8	11	G1/8	6	14	8
SF-Z2611 1/4	13	G1/4	8	17	12
SF-Z2611 3/8	14.5	G3/8	9	19	18
SF-Z2611 1/2	15	G1/2	9	24	27
SF-Z2611 3/4	17	G3/4	11	30	55.6
SF-Z2611 1	18	G1	12	40	88

SF-Z2613


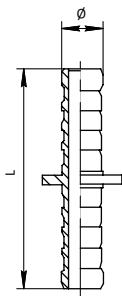
Модель	L	A	SW	Вес, г
SF-Z2613 1/8	12	G1/8	14	11
SF-Z2613 1/4	14	G1/4	17	16
SF-Z2613 3/8	15	G3/8	22	28.6
SF-Z2613 1/2	16	G1/2	24	28.6

SF-Z2601



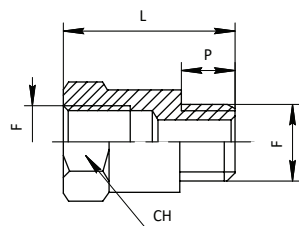
Модель	L	Ø	A	C	SW	Вес, г
SF-Z2601 4,5-M5	23	4.5	M5	4.5	8	7
SF-Z2601 6-G1/8	30	6	G1/8	6.5	14	10
SF-Z2601 7-G1/8	30	7	G1/8	6.5	14	10
SF-Z2601 8-G1/8	30	8	G1/8	6.5	14	10
SF-Z2601 9-G1/8	30	9	G1/8	6.5	14	10
SF-Z2601 10-G1/8	31	10	G1/8	6.5	14	16.6
SF-Z2601 6-G1/4	32	6	G1/4	8	17	13
SF-Z2601 7-G1/4	32	7	G1/4	8	17	15
SF-Z2601 8-G1/4	32	8	G1/4	8	17	17
SF-Z2601 9-G1/4	32	9	G1/4	8	17	15
SF-Z2601 10-G1/4	33	10	G1/4	8	17	19.5
SF-Z2601 12-G1/4	33	12	G1/4	8	17	23
SF-Z2601 9-G3/8	33	9	G3/8	8	17	23
SF-Z2601 10-G3/8	34	10	G3/8	9	20	23
SF-Z2601 12-G3/8	34	12	G3/8	9	20	23
SF-Z2601 14-G3/8	38	14	G3/8	9	20	23
SF-Z2601 16-G3/8	38	16	G3/8	9	20	38.5
SF-Z2601 17-G3/8	38	17	G3/8	9	20	38.5
SF-Z2601 8-G1/2	36	8	G1/2	10	25	40.5
SF-Z2601 10-G1/2	36	10	G1/2	10	25	42.5
SF-Z2601 12-G1/2	36	12	G1/2	10	25	44.5
SF-Z2601 14-G1/2	40	14	G1/2	10	25	48.5
SF-Z2601 16-G1/2	40	16	G1/2	10	25	50
SF-Z2601 17-G1/2	40	17	G1/2	10	25	43.5
SF-Z2601 20-G1/2	40	20	G1/2	10	25	68.5
SF-Z2601 12-G3/4	42	12	G3/4	11	27	70
SF-Z2601 20-G3/4	43	20	G3/4	12	32	86
SF-Z2601 25-G3/4	49	25	G3/4	12	32	85.5

SF-Z2613



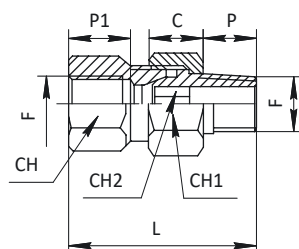
Модель	F	CH	L	Вес, г
Z2612 1/8-5	G1/8	5	5	2
Z2612 1/8	G1/8	5	8	3
Z2612 1/4	G1/4	6	10	7.5
Z2612 3/8	G3/8	8	11	13
Z2612 1/2	G1/2	10	13	22

SF-Z2525

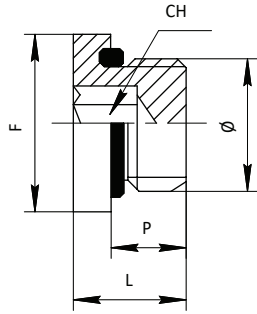


Модель	F	CH	P	L	Вес, г
Z2525 1/8-16	G1/8	14	7	23	14.5
Z2525 1/8-19	G1/8	14	7	26	17
Z2525 1/8-22	G1/8	14	7	29	19.5
Z2525 1/8-25	G1/8	14	7	32	22
Z2525 1/8-36	G1/8	14	7	43	31
Z2525 1/4-27	G1/4	17	8	35	32
Z2525 1/4-43	G1/4	17	8	51	54

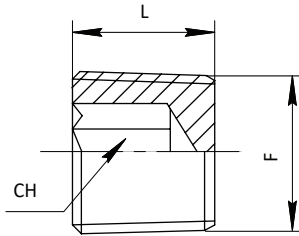
SF-2529



Модель	F	CH	CH1	CH2	P	P1	L	C	Вес, г
Z2529 1/8	G1/8	14	15	5	9	10	31	8.5	19
Z2529 1/4	G1/4	17	19	6	12	12	37	9.5	39
Z2529 3/8	G3/8	21	22	8	12	12	40	10	68
Z2529 1/2	G1/2	25	27	12	15	15	48	12	118

SF-Z2610


Модель	F	CH	P	L	Ø	Вес, г
Z2610 M5	M5	2.5	4	6	8	1.5
Z2610 1/8	G1/8	5	6	9	14	4.6
Z2610 1/4	G1/4	6	8	11.5	18	8.4
Z2610 3/8	G3/8	8	9	12.5	22	16.8
Z2610 1/2	G1/2	10	10	14.5	26	28
Z2610 3/4	G3/4	12	15.5	20	32	79
Z2610 1	G1	17	16	21	40	125

SF-Z2612


Модель	F	CH	L	Вес, г
Z2612 1/8-5	G1/8	5	5	2
Z2612 1/8	G1/8	5	8	3
Z2612 1/4	G1/4	6	10	7.5
Z2612 3/8	G3/8	8	11	13
Z2612 1/2	G1/2	10	13	22